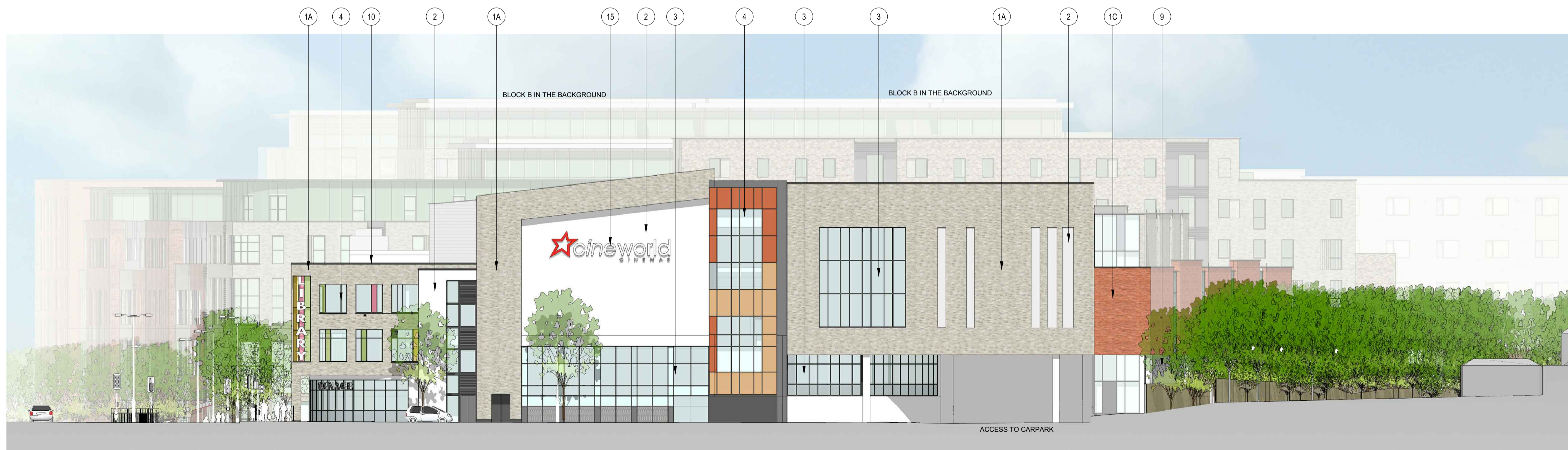




ELEVATION 4 (BLOCK A ELEVATION FACING PEDESTRIAN LINK FROM ARTHRAY ROAD)



ELEVATION 5 (BLOCK A ELEVATION FACING REAR GARDENS OF PROPERTIES ALONG ARTHRAY ROAD)



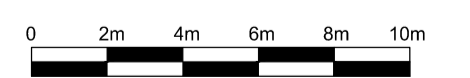
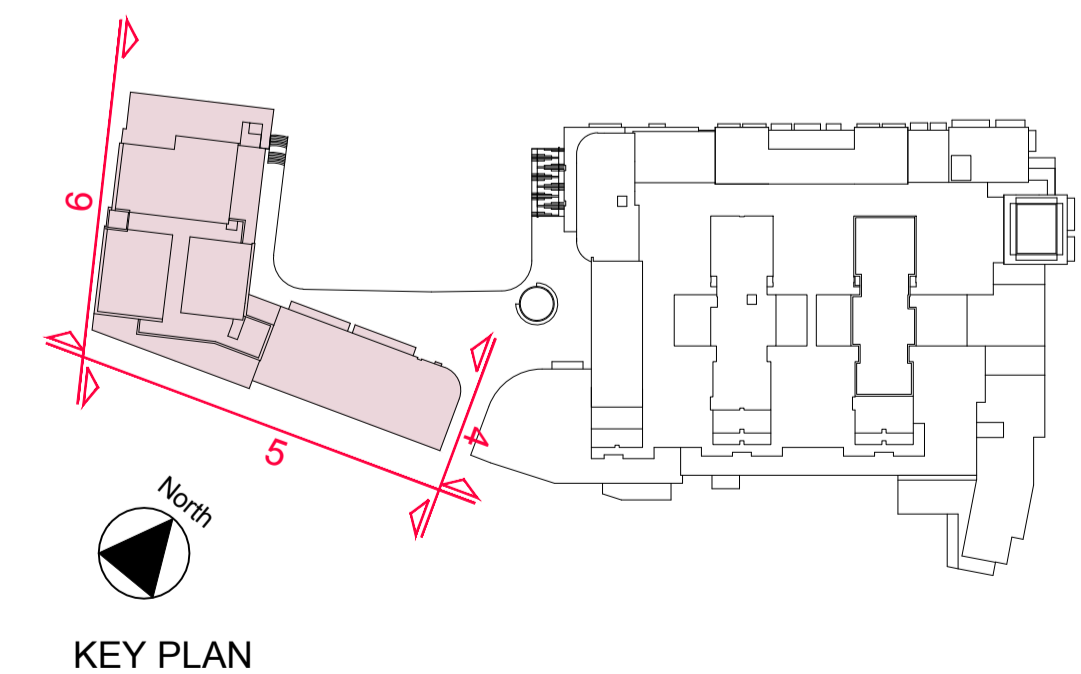
ELEVATION 6 (BLOCK A ELEVATION FACING BLOCK C)

© Mountford Pigott LLP 2012  
 Reproduction in whole or in part by any means is prohibited without the prior permission of Mountford Pigott LLP.  
 This drawing is only to the stated scale if it is printed correctly. MPLLP cannot accept responsibility for the incorrect scaling of drawings printed by third parties.  
 All dimensions are in mm unless otherwise stated.  
 If this drawing forms part of an application for planning permission on behalf of the applicant named below, it shall not be used for any other purpose without the express permission of Mountford Pigott LLP.  
 This drawing may incorporate information from other professionals. Mountford Pigott LLP cannot accept responsibility for the integrity and accuracy of such information. Any clarification and/or additions that are required appertaining to such information should be sought from the relevant profession or their appointment representative as listed below.  
 LIST OF INFORMANTS:  
 Ordnance Survey - Licence number 10001998  
 REVISIONS:  
 SCHEME REVISED DATE 05.08.14 DRN WMS A-DRAFT  
 SCHEME DEVELOPED AND REVISED TO INCORPORATE PLANNERS COMMENTS 02.09.14 WMS A  
 GENERAL UPDATE FOLLOWING PLANNING AUTHORITY COMMENTS 05.11.14 WMS B

NOTE: DEVELOPMENT BOUNDARY AND AREA SUBJECT TO SITE SURVEY.

**MATERIALS**

- 1A MIXED LIGHT GREYS PRE-BLENDED BRICKS (MOSAIC APPEARANCE)
- 1B MIXED REDS PRE-BLENDED BRICKS (MOSAIC APPEARANCE)
- 1C LIGHT RED BRICKS
- 1D LIGHT CREAM/ DARK GREYS PRE-BLENDED BRICKS (MOSAIC APPEARANCE)
- 1E LIGHT BROWN BLEND BRICK
- 1F MIXED GREY BLENDED BRICK
- 2 INSULATED RENDER SYSTEM. COLOUR: WHITE/ LIGHT GREY
- 3 POLYESTER POWER COATED (PPC) ALUMINIUM WINDOW/SHOPFRONT SYSTEM. COLOUR: RAL 7015
- 4 (PPC) ALUMINIUM CURTAIN WALLING SYSTEM WITH COLOURED AND SPANDREL GLAZING. COLOUR: RAL 7015
- 5 NATURAL ANODISED ALUMINIUM RAINSCREEN CLADDING SYSTEM
- 6 HORIZONTAL TIMBER CLADDING SYSTEM
- 7 SIGNAGE FASCIA. ANODISED ALUMINIUM CLADDING SYSTEM
- 8 ANODISED ALUMINIUM RAINSCREEN CLADDING SYSTEM. COLOUR: LIGHT/ DARK GREY RANGE
- 9 TEXTURED BLOCKWORK. COLOUR: MID-GREY
- 10 ALUMINIUM CAPPING SYSTEM. COLOUR: RAL 7015
- 11 COLOURED GLASS FINS
- 12 GLASS BALUSTRADE
- 13 GLASS CANOPY
- 14 REYNOLDBOND RAINSCREEN SYSTEM. COLOUR: COPPER PATINA FINISH
- 15 SIGNAGE SUBJECT TO SEPARATE PLANNING APPLICATION
- 16 AWNINGS



MountfordPigott

WEST WAY BOTLEY  
 BLOCK A - ELEVATIONS  
 1612-P-15-B

1:200@ A1/ 1:400@ A3 09.12.13  
 DRAWN BY NTI/WMS